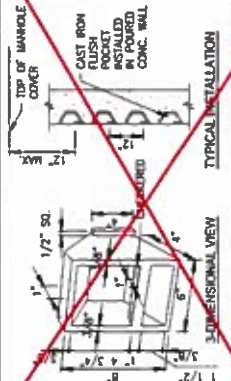


NOTES:

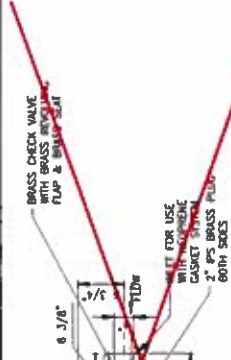
1. ENCASED MANHOLE TYPE 1 FOR ACCESS TO MAIN TRACK BRASS VALVE INDICATED. ~~DETAIL OF DRAIN AND FRAME. 325 POUNDS.~~
2. FOR STRUCTURAL DIMENSIONS AND REINFORCING SEE STRUCTURAL DRAWINGS.
3. CONCRETE ENCASEMENT IS NOT REQUIRED FOR PERFORATED PIPES AS INDICATED FOR ROCK TUNNEL.
4. ~~WHERE POLYVINYL CHLORIDE OR POLYETHYLENE TEREPHTHALATE MAIN PIPE DRAIN MATERIAL USE CAST IRON PIPE FOR MINIMUM OF 2 FT. EACH SIDE OF MANHOLE.~~
5. MATERIAL FRAME AND GRATE, CAST IRON PER ASTM A48 CLASS 35.
6. ~~NO CARBON AND LEAD CALICING-ALL CASTINGS TO BE USED WITH MEDIPRENE CASSET SYSTEM. ALL MANHOLE CASSETS SHALL BE CAST-ONED EXCEPT FOR USE WITH SCUPPER AND SCUPPER DRAINS.~~
7. ~~CASTING DIMENSIONS SHALL BE PER MANUFACTURER'S STANDARDS AND THE SPECIFIED SIZE OF PIPE.~~



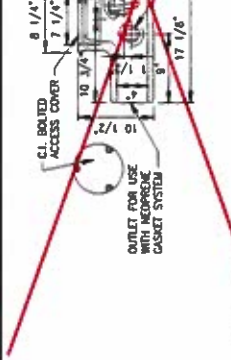
17 ~~DETAIL MANHOLE - TYPE 1~~
DD-14E-PLUM-010 SCALE: NONE



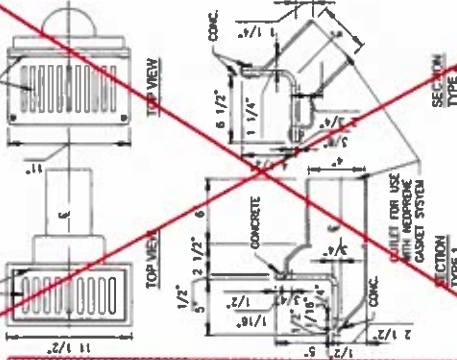
5 ~~DETAIL FLUSH POCKET TYPE MANHOLE~~
DD-14E-PLUM-010 SCALE: NONE



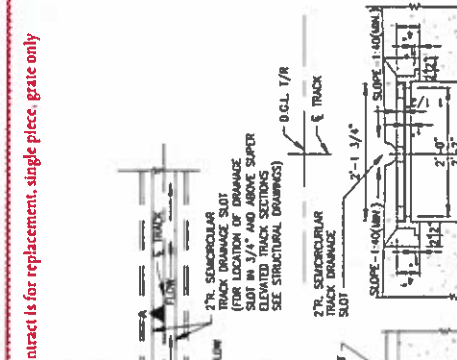
11 ~~DETAIL SCUPPER DRAINS~~
DD-14E-PLUM-010 SCALE: NONE



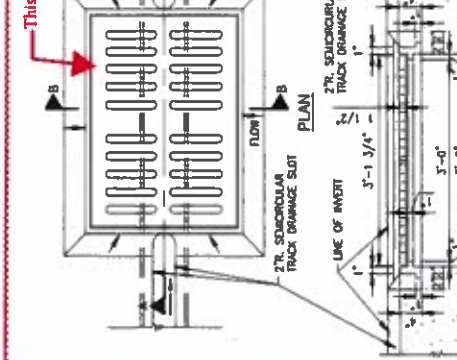
7 ~~DETAIL FLOOR DRAIN - TYPE 1~~
DD-14E-PLUM-010 SCALE: NONE



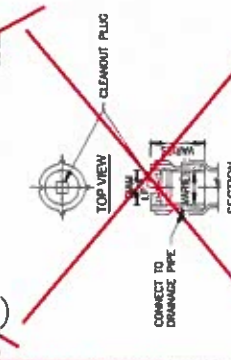
1 ~~DETAIL CLEANOUT - TYPE 1~~
DD-14E-PLUM-010 SCALE: NONE



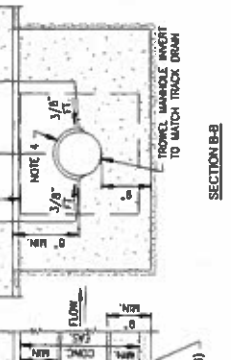
11 ~~DETAIL SCUPPER DRAINS~~
DD-14E-PLUM-010 SCALE: NONE



5 ~~DETAIL FLUSH POCKET TYPE MANHOLE~~
DD-14E-PLUM-010 SCALE: NONE



17 ~~DETAIL TAIL BACKWATER VALVE~~
DD-14E-PLUM-010 MATERIAL: CAST IRON & BRASS AS NOTED SCALE: NONE



20 ~~DETAIL MANHOLE - TYPE 1~~
DD-14E-PLUM-010 SCALE: NONE



27 ~~SCUPPER DRAINS~~
DD-14E-PLUM-010 SCALE: NONE

MECHANICAL DESIGN DIRECTIVE DRAWINGS
PLUMBING
DRAINAGE DETAILS AND CASTINGS
SHEET 1 OF 4

WASHINGTON METROPOLITAN AREA TRANSIT AUTHORITY
OFFICE OF THE CHIEF ENGINEER
CENI - POWER SYSTEMS ENGINEERING

APPROVED: *[Signature]* DATE: 12/8/16
PAUL PETERSON
CHIEF ENGINEER

SCALE: NONE
CONTRACT NO: DD-14E-PLUM-010
SHEET NO: 01 OF 04

NO.	DATE	DESCRIPTION

DESIGNED	DATE	BY	DATE

This contract is for replacement, single piece grate only